



## DO SERIES

ARTICULATING AERIAL LIFT  
INSULATED OR NON-INSULATED  
WITH OVERCENTER CAPABILITIES!



DO-32 PICTURED

### SPECIFICATIONS

	DO-36	DO-32
WORKING HEIGHT	41'	37'
SIDE REACH	30'4"	26'4"
APPROX. STOWED TRAVEL HEIGHT	9'8"	9'8"
HEIGHT TO BOTTOM OF PLATFORM	36'	32'
BASKET CAPACITY	350#	350#
APPROX. LIFT WEIGHT	2500#	2400#
LOWER BOOM TRAVEL	0° to 100°	0° to 100°
UPPER BOOM TRAVEL	0° to 196°	0° to 196°
INSULATION GAP	12.25'	12'
UPPER BOOM FIBERGLASS LENGTH	15'2"	12'10"

Dur-A-Lift Inc. reserves the right to improve models and change specifications without notice or obligation. Dur-A-Lift equipment meets or exceeds all applicable ANSI Standards as of the date of manufacture.

ARTICULATING OVERCENTER

WORKING HEIGHT UP TO 41'

SIDE REACH TO 30'4"

FIBERGLASS OR ALUMINUM BASKET

INSULATED (DO) OR NON-INSULATED (DOS)



### WE SPEAK BUCKET TRUCK

[DUR-A-LIFT.COM/GUIDE](http://DUR-A-LIFT.COM/GUIDE)

BROWSE ALL MODEL OPTIONS ONLINE!

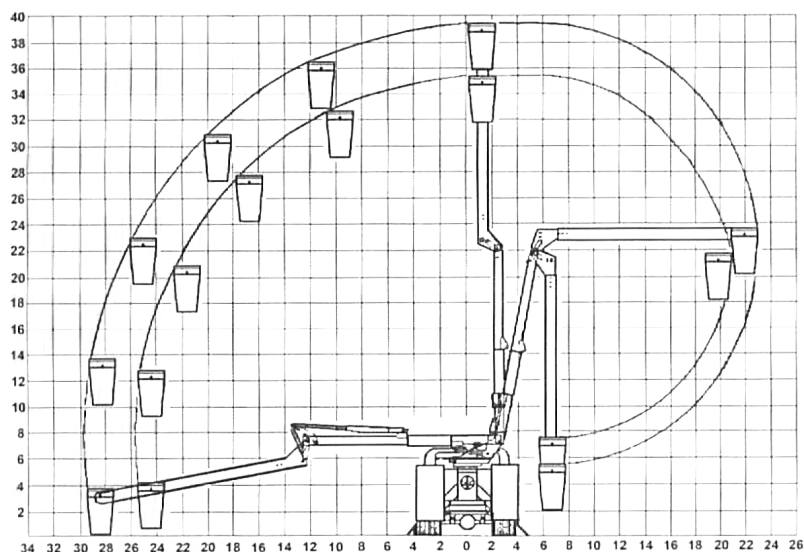


# DO SERIES



DO-32

## REACH DIAGRAM



CHASSIS REQUIREMENT, MIN.: 15,000 GVWR\*  
CHASSIS CAB TO AXLE REQUIREMENT, MIN.: 60"

\*Minimum GVWR will change significantly depending on make of chassis and stabilizer option.

## STANDARD

**CONTROLS:** Full pressure proportional controls; upper control shut-off provided at the turntable; three control levers at the turntable and basket; deadman at the basket; engine start/stop from the basket.

**HYDRAULIC SYSTEM:** Open-center system; rated pressure is 2200 PSI; operating pressure is 2000 PSI; 5 to 7 GPM pump flow; 11 gallon oil reservoir.

**MECHANICAL SYSTEM:** Basket-leveling by glass rods and chain parallelogram system with easy service access; rotation by hydraulically driven spur gear with shearball rotation bearing; basket support.

**SAFETY FEATURES:** Integral holding valves in each cylinder; pressure relief valve; non-conductive hoses and fiberglass rods provide leveling and control through the insulated boom section; upper-boom constructed of fiberglass and rated for work voltages to 46 kv and below; emergency stop system.

## OPTIONAL

Continuous rotation; pedestal mounted outriggers; torsion bar; 12v DC full-function back-up system; single-hand control lever; basket liner; basket and control cover; hydraulic tool circuit at basket and pedestal; basket tilt system; automatic or two-speed throttle advance; upper-boom electrical test bands; lower-boom fiberglass insert; lower-boom lifting hook.



DO-36 PICTURED



READ MORE

## BUILT FOR YOU

Ask about available chassis, body, tailshelf, and basket options.



DUR-A-LIFT, INC., 2002 KINGBIRD AVENUE, PO BOX 31, GEORGE, IOWA 51237  
1-877-438-7254 | SALES@DUR-A-LIFT.COM | DUR-A-LIFT.COM