

DEJANA[®]
Truck and Utility Equipment

dyna/PRO

Solid Side, Vented or Solid Rack
LANDSCAPERS





General Specifications

- Available in 9.5' & 12' Lengths
- 96" Body Width
- Available in 40" and 48" Side Heights
- Interior Useable Length: 107.5" (9.5') and 145" (12')
- 50" Curbside Door Opening
- ASTM A572 GR50 Alloy Steel
- Black Semi-gloss Powdercoat
- Pre-punched Accessory Holes
- New Ergonomic Hand-held Controller standard
 - Optional Dual Functionality (Dump & Plow) Available.
- Formed C-channel Longsills (.188")
- 3 Ribs (.188")
- 2 Piece 10ga. Floor
- Fully Welded Steel Rubrail
- 12ga. Bulkhead



Electrical Specifications

- (2) 6" Rubber Grommet Mounted S/T/T/R Tail Lights
- (7) 3/4" Red Round Rear Skirt Marker Lights
 - (3) Rear Skirt
 - (1) Rear Side (each side)
 - (2) 3/4" Amber Round Front Marker Lights, 45 Bevel Mounted



Solid Side Landscaper						
Part #	Length	Side Height	Interior Usable Length	Approx. Body Weight w/ Barn Doors	Approx. Body Weight w/ 3-piece Door	Approx. Body Weight w/ 3-piece Coal Chute Door
DPL-MS-LS9	9.5'	40"	107.5"	1659	1705	1710
		48"		1772		
DPD-MS-FX11	12'	40"	145"	2032	2078	2083
		48"		2167		

Removable Side Landscapers					
Part #	Length	Side Height	Interior Usable Length	Side Type	# of Panels
DPL-MS-VR9	9.5'	40"	107.5"	Vented Rack	4
		48"			
DPL-MS-VR12	12'	40"	145"	Vented Rack	6
		48"			
DPL-MS-SR9	9.5'	40"	107.5"	Solid Rack	4
		48"			
DPL-MS-SR12	12'	40"	145"	Solid Rack	4
		48"			

Solid Sides Landscaper - LS

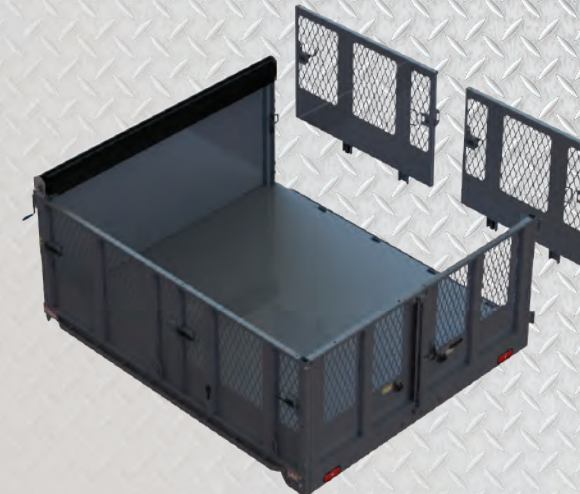
- Interchangeable Rear Door Options:
 - 2 Piece (Full Barn Doors)
 - 3 Piece (Tailgate & Barn Doors)
- 12ga Panels
- 12ga. Stakes
- 180 degree Swing Curbside Access Door
 - 50" W Opening
 - 12ga. Panel Thickness
 - 12ga. Vertical Support
 - Bar Lock Latch w/ Hasp Retention Clip
 - Integral Grab Handle
- 2 Piece Rear Door:
 - 12ga. Panel Thickness
 - (2) 7ga. Hinges per Door
 - 270 degree Door Swing
- 3 Piece Rear Door:
 - 17.5" Tailgate Height
 - Slide Locking Tail Gate Latches
 - 12ga. Panel Thickness
 - (2) 7ga. Hinges Per Overhead Door
 - 270 Degree Door Swing
- Optional Full Cab Shield Specifications:
 - 42" Forward Distance
 - 14ga. Panel Thickness
 - Available in (3) Cab Heights
 - 50.5", 56.5", 60.5"



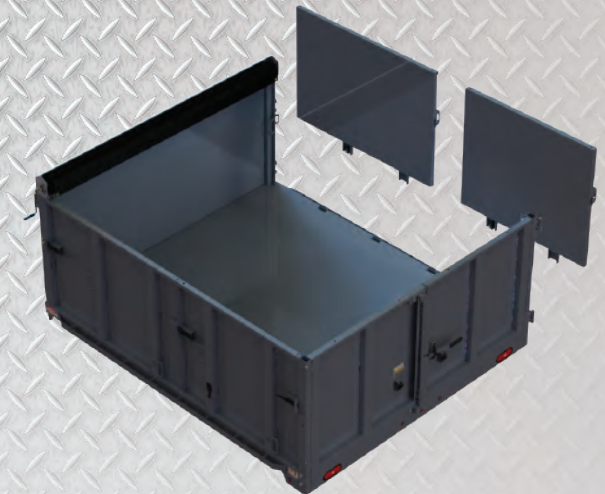
Removable Rack Bodies

- Standard Bolt-on Tarp Hooks
- 2 Piece Rear Barn Doors
- Removable Side Walls:
 - 12ga. Panel Thickness
 - 12ga. Stakes
 - Platform Latch Sections Secure to Platform with Spring Loaded Latches
- **9.5' Body Length:**
 - (2) Standard Racks
 - (1) Unique DS Rack
 - (1) Unique PS Rack
- **12' Body Length:**
 - (6) Standard Racks

Vented Rack Body - VRL



Solid Rack Body - SRL



dyna/PRO

Solid Side Landscaper Tailgate Options



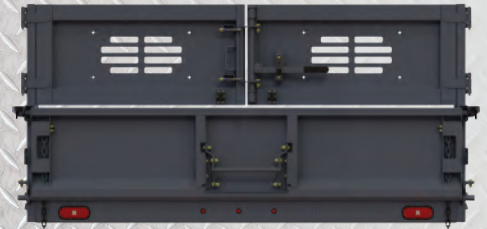
2-Piece Rear Door

Full height barn doors
12ga. panel thickness
(2) 7ga. Hinges per door
270 Degree door swing w/ retention latches



3-Piece Rear Door

Tailgate w/ barn doors above
Slide locking tail gate latches
12ga. panel thickness
(2) 7ga. Hinges per door
270 Degree door swing w/ retention latches



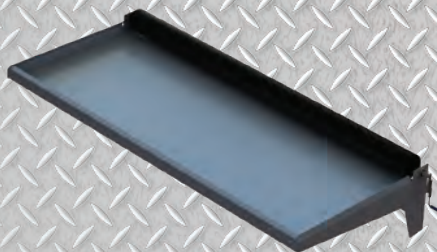
3-Piece Rear Door - Coal Chute

12ga. panel thickness
(2) 7ga. Hinges per door
Coal chute factory installed in center
Double linkage lift mechanism
6" Opening height

Options & Accessories



Bolt-on Chipper Top
Available for Solid Side only
Compatible with cab shield.



Bolt-on Full Cab Shield
Available for Solid Side only
42" Forward distance.
Cab height range from frame:
50.5", 56.5", 60.5"



Bolt-on Tarp Housing
Includes retaining hooks for
rear of body.



**Bolt-on Underbody
Access Ladder**
Located under curbside access
door.